



actis



LORDSVIEW LOGISTICS HUB



ABOUT IMPROVON

Improvon is a real estate investment company operating across sub-Saharan Africa with expertise in providing tenants with A-grade warehousing, distribution and logistics facilities built to clients specifications. Established in 1995, Improvon has a distinguished track record in logistics and warehousing, with a collective 100 years' experience. The founders are still active in the business.

Improvon is one of the few dedicated development businesses in the sector, offering tenants a turn-key solution in construction, leasing and asset & property management, resulting in quicker turn-arounds, balance sheet optimisation and better cost control.

ABOUT ACTIS

Actis is a leading investor in growth markets in Africa, Asia and Latin America with > 70 years heritage, across diverse asset classes of consumer, energy, financial services, infrastructure and real estate. With \$13Bn raised since inception, Actis has made more than 220 investments across 40 countries globally. The Actis Real Estate Fund recently closed on its third opportunistic private fund, with commitments totaling \$500M – the largest private real estate fund targeting sub-Saharan Africa to date.

Actis' Real Estate investment strategy focuses on the development of retail, office and industrial assets in some of the most dynamic cities in Africa. Over the past decade, the fund has invested in assets valued at \$1.4Bn on a gross asset value base.

- Marketing the property
- Negotiate new leases & lease renewals
- Inspect, manage & ensure compliance & maintenance of properties
- Administer rental invoices & collections, municipal accounts & group reporting



- Identify warehousing, distribution & logistics property opportunities
- Conduct feasibility assessments
- Acquire properties
- Design assets
- Funding
- Commission of development

- Co-ordinate the professional team
- Attain regulatory approvals
- Construct asset

**#THE IMPROVON
DIFFERENCE**

We own and manage the value chain, ensuring confidence in execution:

- Our projects are on time, within budget and to specification
- We draw on a team of more than 80 expert, full-time employees across Improvon's businesses

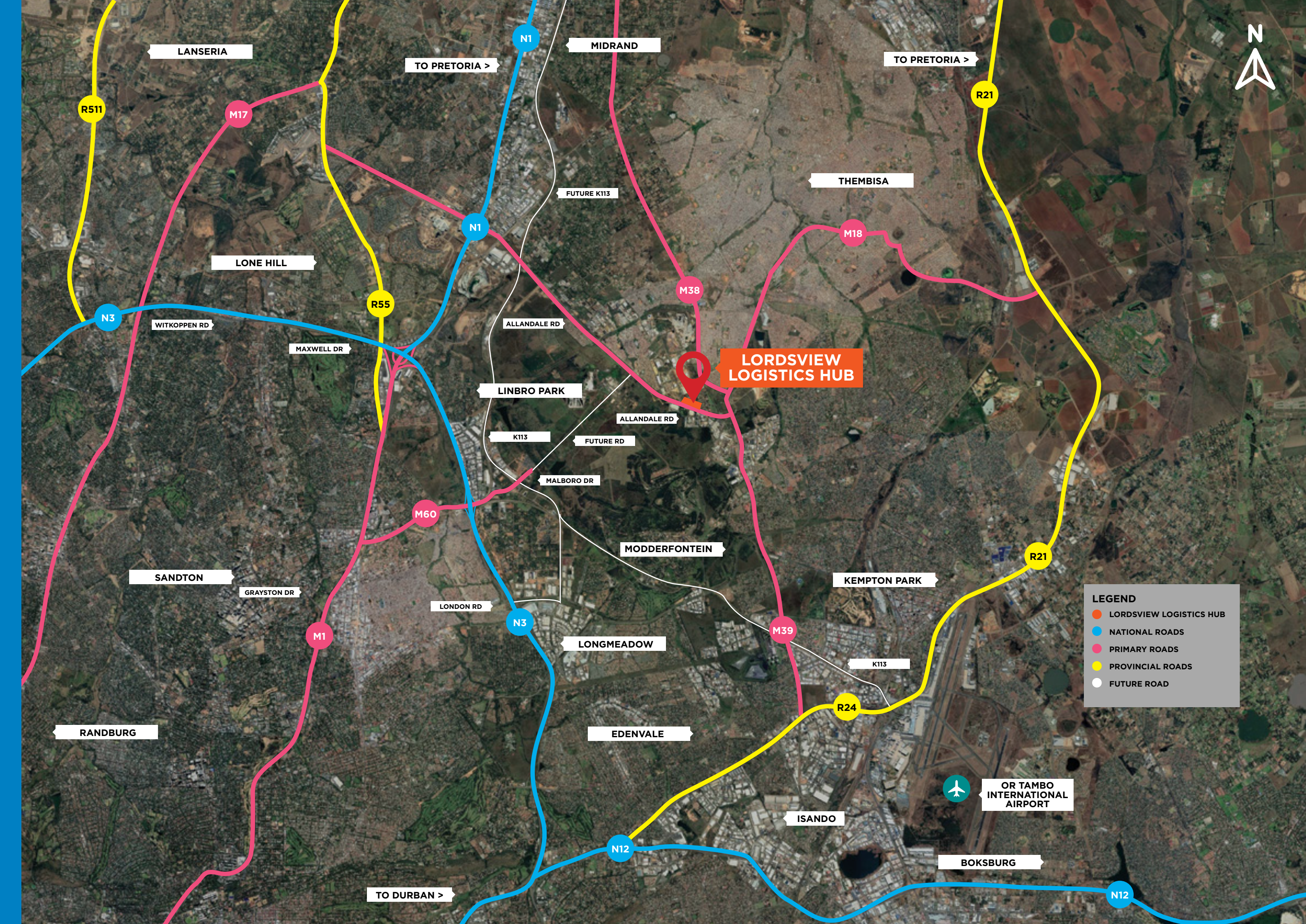


LOCATION

Lordsview Logistics Hub is located along Allandale Road within the Lordsview Industrial park.

The park is in close proximity to the well known Linbro Business Park which has established its popularity for being easily accessible to major arterials routes such as the N3 and N1 highways. O.R Tambo International Airport is also a mere 20 minute drive from site.

Lordsview Logistics Hub will soon be linked via the new K113 arterial road to Allandale Road in Midrand. This new K113 will run parallel to the N1 highway providing an alternative route to Midrand and Centurion.



PROPERTY AVAILABLE

WAREHOUSE AND LOGISTICS DEVELOPMENT

SIZE:	1 000m ² - 20 000m ²
-------	--

AREA SCHEDULE

SITE AREA: 72 572m²

UNIT 1

WAREHOUSE	7 133 m ²
OFFICE GROUND:	124 m ²
OFFICE FIRST:	372 m ²
TOTAL UNIT 1:	7 629 m ²

UNIT 2

WAREHOUSE	4 000 m ²
OFFICE GROUND:	200 m ²
OFFICE FIRST:	200 m ²
TOTAL UNIT 2:	4 400 m ²

UNIT 3

WAREHOUSE	2 280 m ²
OFFICE GROUND:	120 m ²
OFFICE FIRST:	200 m ²
TOTAL UNIT 3:	2 600 m ²

UNIT 4

WAREHOUSE	2 280 m ²
OFFICE GROUND:	120 m ²
OFFICE FIRST:	200 m ²
TOTAL UNIT 4:	2 600 m ²

UNIT 5

WAREHOUSE	2 280 m ²
OFFICE GROUND:	120 m ²
OFFICE FIRST:	200 m ²
TOTAL UNIT 5:	2 600 m ²

UNIT 6

WAREHOUSE	2 280 m ²
OFFICE GROUND:	120 m ²
OFFICE FIRST:	200 m ²
TOTAL UNIT 6:	2 600 m ²

UNIT 7

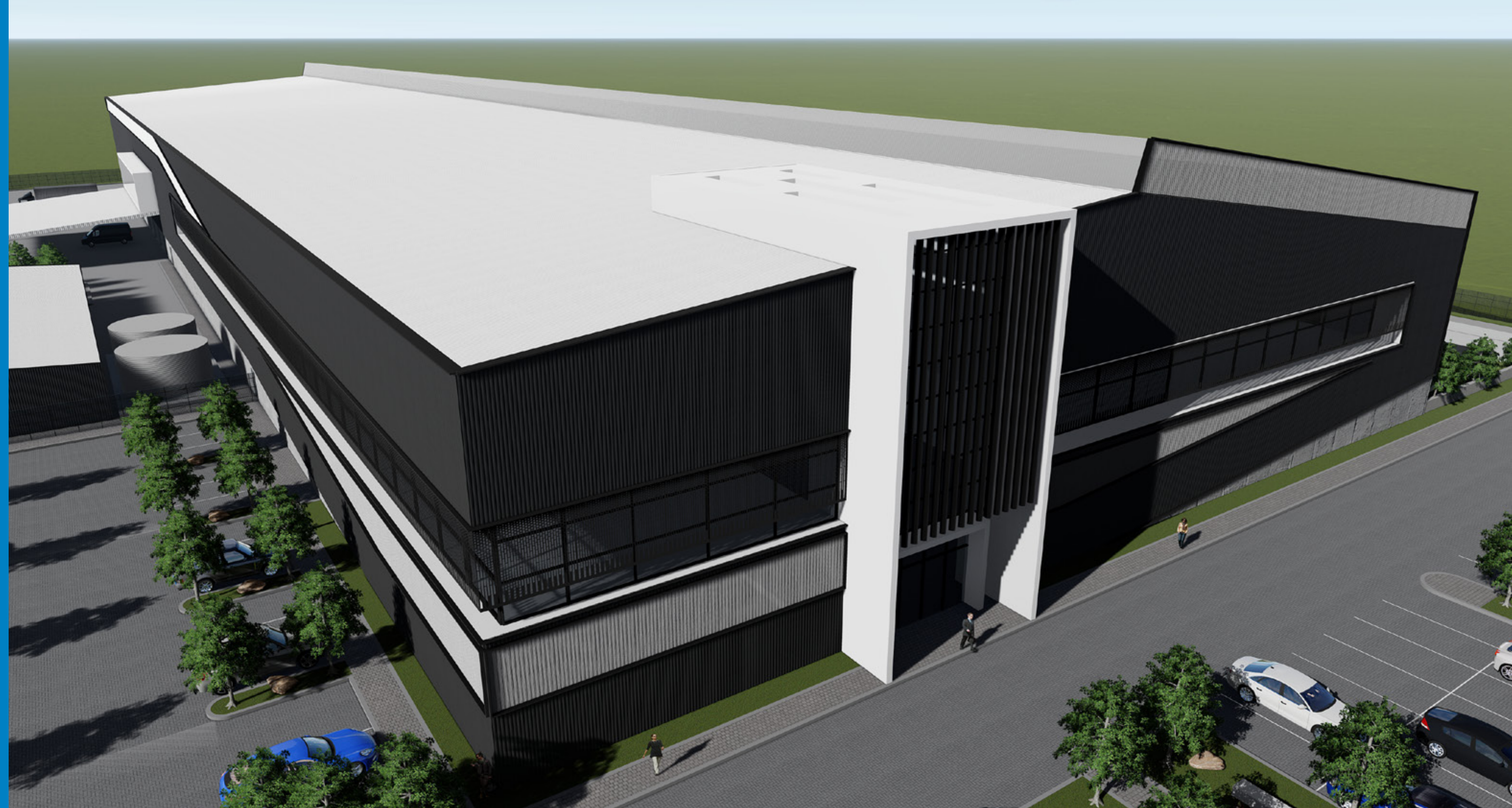
WAREHOUSE	7 477 m ²
OFFICE GROUND:	204 m ²
OFFICE FIRST:	324 m ²
TOTAL UNIT 7:	8 005 m ²

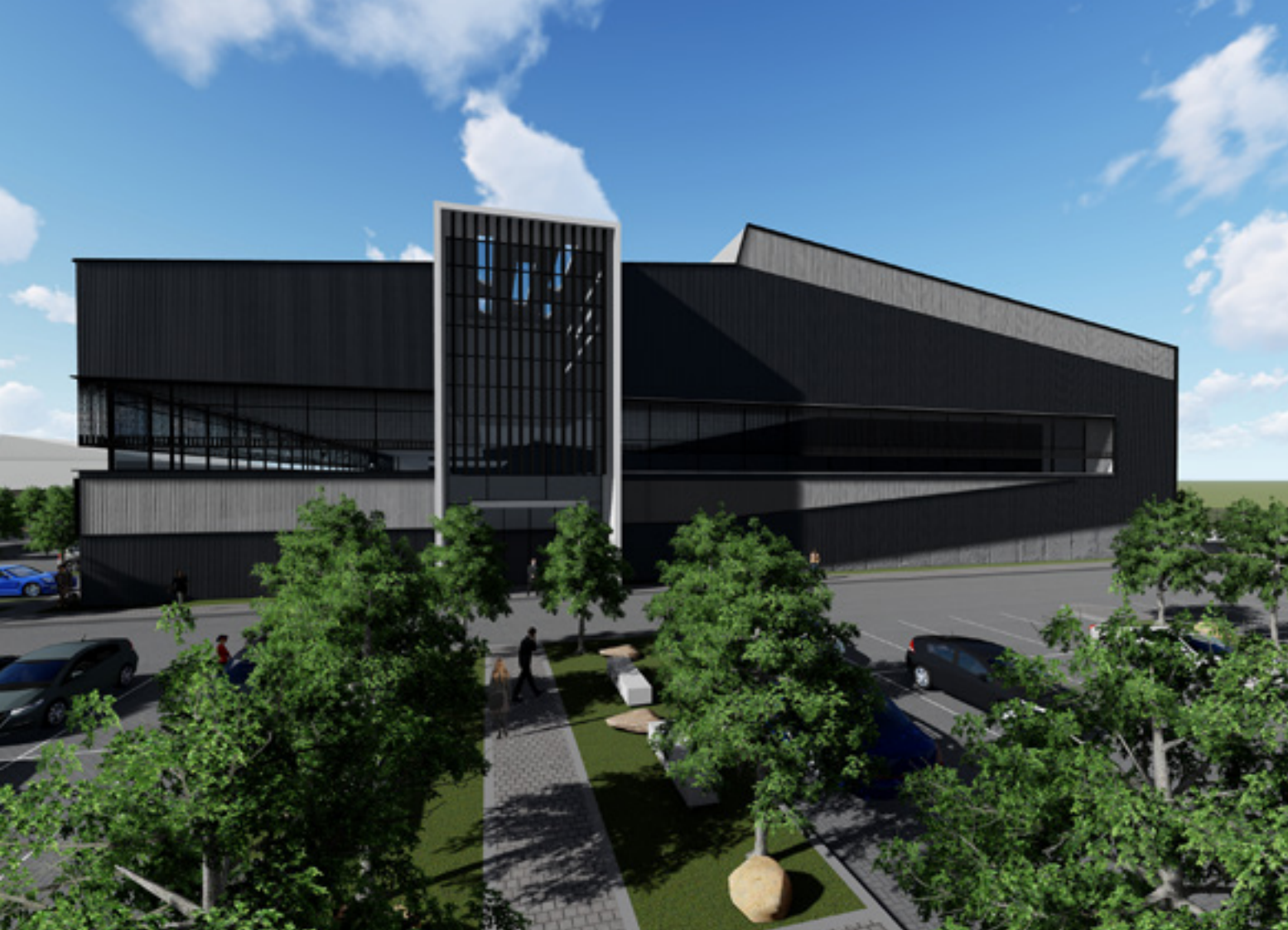
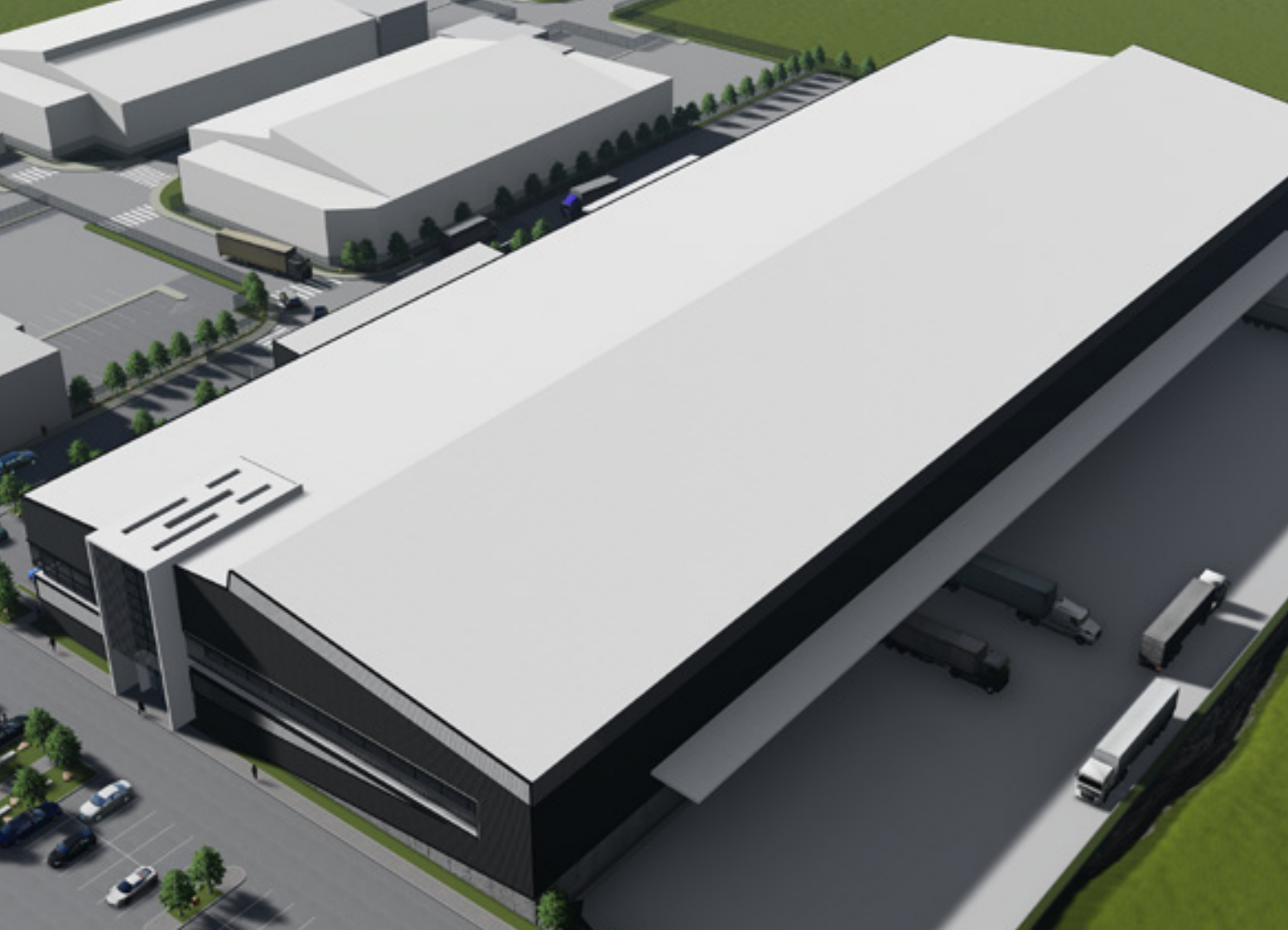
UNIT 8

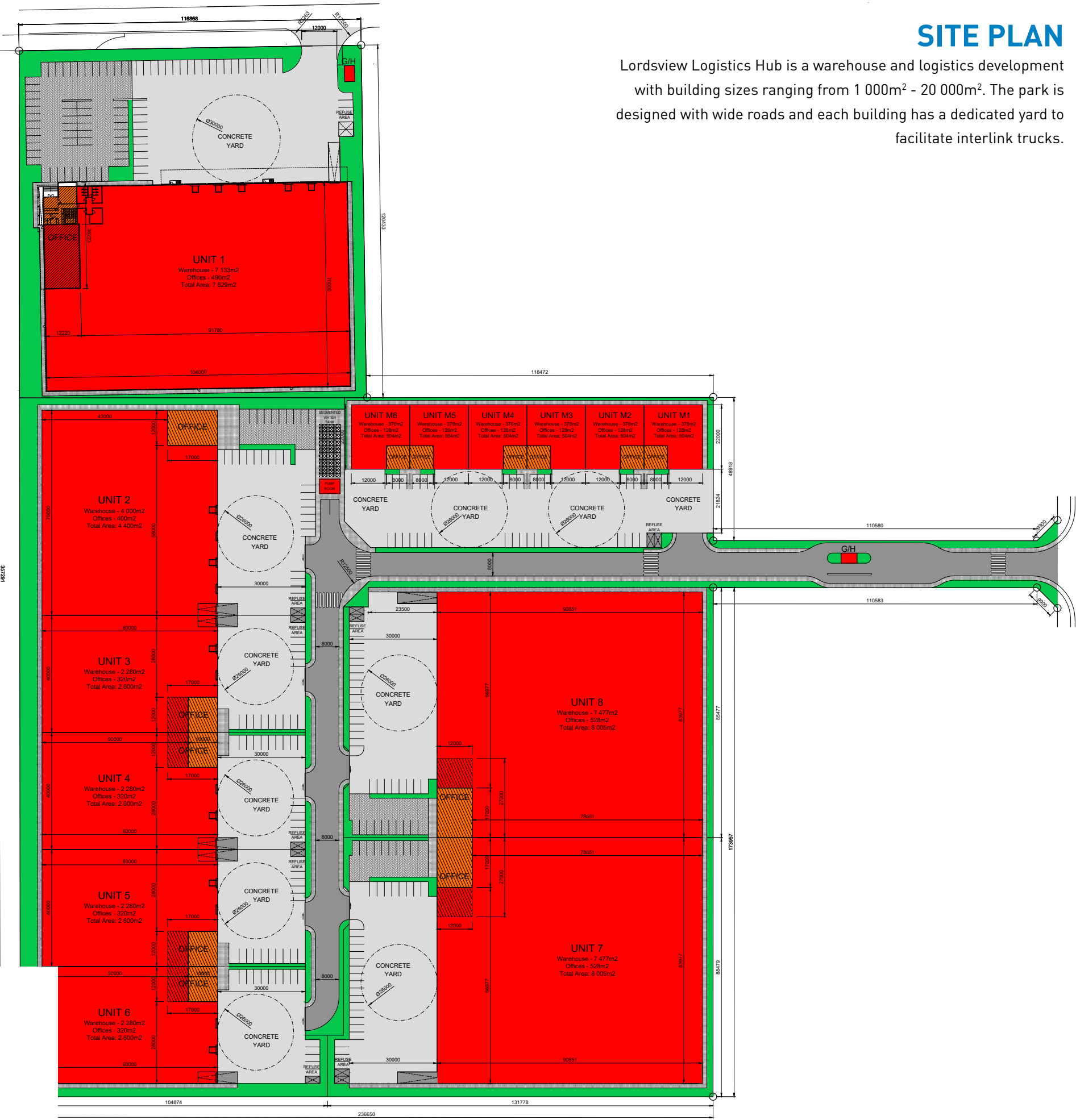
WAREHOUSE	7 477 m ²
OFFICE GROUND:	204 m ²
OFFICE FIRST:	324 m ²
TOTAL UNIT 8:	8 005 m ²

MINI UNITS M1 – M6:

WAREHOUSE	2 256 m ²
OFFICE GROUND:	384 m ²
OFFICE FIRST:	384 m ²
TOTAL MINI UNIT :	3 024 m ²







SITE PLAN

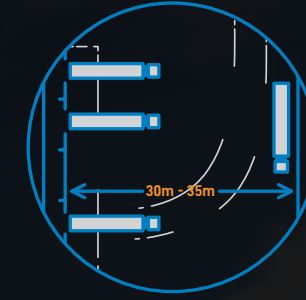
Lordsview Logistics Hub is a warehouse and logistics development with building sizes ranging from 1 000m² - 20 000m². The park is designed with wide roads and each building has a dedicated yard to facilitate interlink trucks.

WAREHOUSE FEATURES



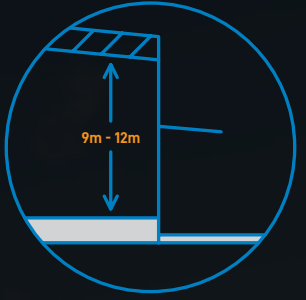
SECURITY:

- Full height electrified perimeter ClearVu fence.
 - 24 Hour main guard house.
- Various buildings have internal guard houses for additional security.
- Each building is individually fenced off.



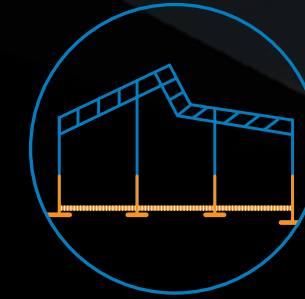
YARDS & CIRCULATION:

- Each building has a dedicated yard with 30m turning circle for interlinks.
- Park is designed with wide roads to facilitate interlink trucks.



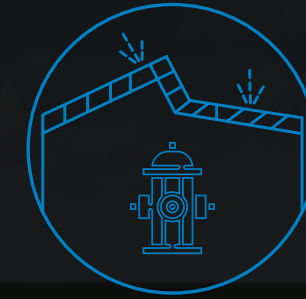
EAVES:

Eaves height varies from 9m to 12m depending on size of building.



FLOORS:

FM2 Large panel fibre reinforced floors 160mm thick 35Mpa, UDL of 80KN per m².



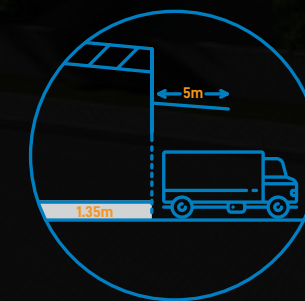
FIRE PROTECTION:

There are central pumps and tanks as well as roof top sprinklers.



ROLLER SHUTTER DOORS:

Each warehouse has a ramp, as well as multiple sectional roller shutter doors.



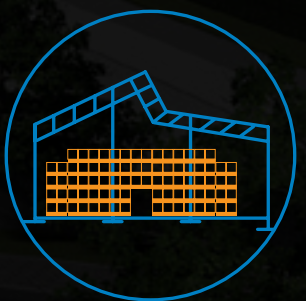
DOCK HEIGHT:

- Doors are at 1.35m to facilitate loading.
- A 5m canopy enables offloading during inclement weather.



AESTHETICS:

Much attention is paid to architectural design and landscaping to ensure a pleasant work environment.



RACKING:

Warehouse is designed for maximum pallet positions.



CONTACT US

MARK TRUSCOTT

EMAIL: mark.t@improvon.co.za

CELL: 076 402 4385

BRUCE WALSH

EMAIL: bruce.w@improvon.co.za

CELL: 083 454 2676

IMPROVON LANDLINE: 011 409 9300

www.improvon.co.za